

**BRAZILIAN
BLOWOUT
FREE
INSTRUCTIONS**

BRAZILIAN BLOWOUT **FREE**™

Congratulations on your purchase of **Brazilian Blowout FREE** —the world's first **patent pending** smoothing treatment **formulated without formaldehyde**.

Now you can confidently offer your clients a smoothing treatment clinically shown to deliver long-lasting frizz-free results—without unwanted ingredients.



TOOLS



COLOR BOWL



NITRILE GLOVES



CAPE



BLOW DRYER



ROUND BRUSH



HAIR CLIPS



MEASURING CUP



APPLICATOR BRUSH



COLOR WHISK



FLAT IRON THAT REACHES 450°F



CARBON FIBER FINE TOOTH COMB

TRAINING

Sign up for Free Live Trainings.
Scan to book now.



HOTLINE

Connect with a **Brazilian Blowout Trainer** *Instantly*.*

1-877-779-7706 (press "3")

*Monday-Friday 7:30AM to 4:30PM PST

For best results, first assess the client's hair type and condition (see guide below). Follow the appropriate treatment instructions. Perform the treatment 2 weeks before or after color services.*

*Direct dyes and root touch ups only may be applied the same day after the treatment.

COARSE/HEALTHIER HAIR

Instructions: Pages 2-5



INCLUDES: Non-compromised, single process, virgin, resistant, curly and/or frizzy, minimal to moderate highlights.

FRAGILE/COMPROMISED HAIR*

Instructions: Pages 7-10



INCLUDES: Double-processed, heavily highlighted, balayage, fine/thin, dry, curly/wavy, frizzy, weaker hair.

*If the client's hair is too weak for another bleaching or highlighting process, we do not recommend performing this treatment. Once the hair is stronger and can withstand a lightening service, proceed with the Fragile/Compromised instructions.

COARSE/HEALTHIER HAIR INSTRUCTIONS

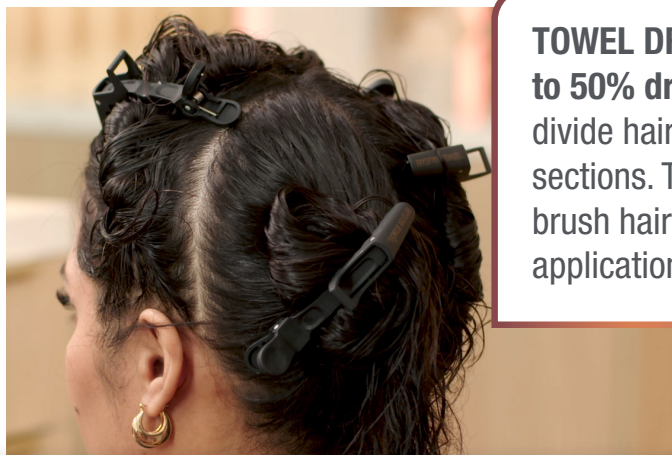


INCLUDES: Non-compromised, single process, virgin, resistant, curly and/or frizzy, minimal to moderate highlights.

1 CLEANSE & PREP



Spray **Micro Chelating Cleanser** generously on soaking wet hair & scalp. Massage until foamy. Rinse thoroughly. Repeat if necessary.

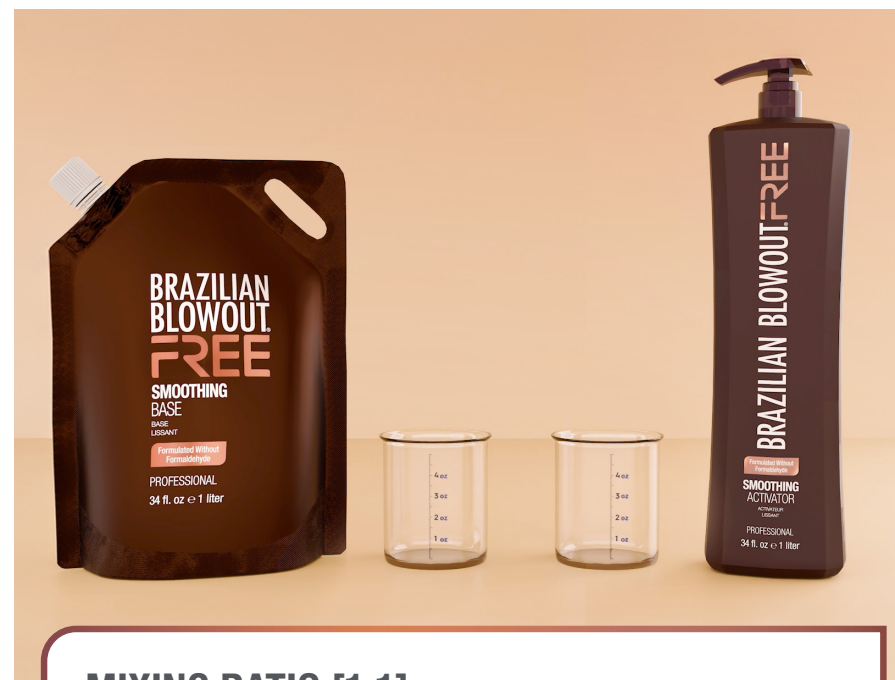


TOWEL DRY hair to **50% dry**. Then divide hair into 4 sections. Thoroughly brush hair before application.

Why?

Required for the smoothing system to work, removes deposits & buildup while opening the cuticle—allowing smoothing solution to reach the hair bonds.

2 MEASURE & MIX



MIXING RATIO [1:1]

50% **Smoothing Base** + 50% **Smoothing Activator**

MEASURE:

SHORT HAIR

2 - 3 oz.
(60-90ml)
Combined

MEDIUM LENGTH HAIR

3 - 4 oz.
(90-120ml)
Combined

LONG HAIR

4 - 6 oz.
(120-180ml)
Combined

Why?

The treatment will not work unless the Smoothing Base and Smoothing Activator are properly mixed together.

3 APPLY



Must wear gloves

Apply solution to ¼" to ½" (1 to 1.5cm) sub sections, ¼" (1cm) off roots.

SATURATE THE HAIR
like color and comb straight.

IMPORTANT: Do not excessively comb the hair again after applying.

IMPORTANT: For hair with different integrities, **apply to resistant hair first and weaker hair last.** Hair with overly **compromised ends, LEAVE OUT.**

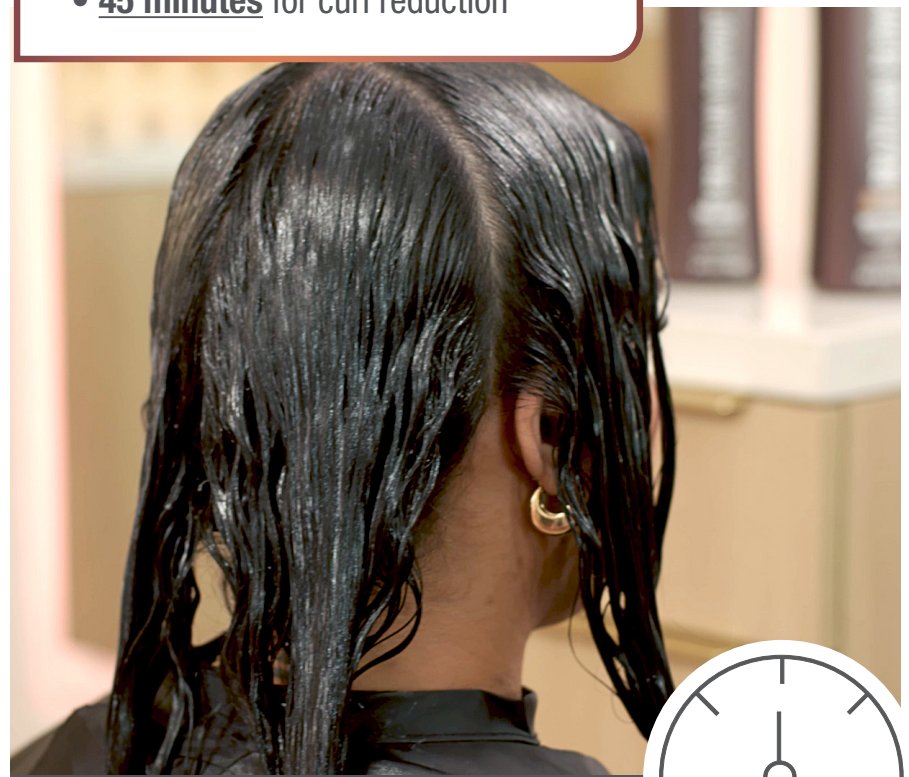
Why?

Saturate solution onto 50% towel-dried hair for optimal penetration—excess water can dilute the solution and reduce results.

4 PROCESS

Process in open air. Leave hair straight. Do not clip. Do not use heat.

- **30 minutes** to defrizz
- **45 minutes** for curl reduction



Why?

Processing allows smoothing technology to move bonds into alignment for desired results.

5 RINSE & CLEANSE

Rinse hair with **HOT WATER** for **3 MINUTES**.



Cleanse 2-3 times with **Micro Chelating Cleanser**. Scrub hair **vigorously**—roots to ends.



IMPORTANT: Rinse and cleanse as directed to remove **ALL** solution from the hair.



Why?

The smoothing solution must be fully rinsed and thoroughly cleansed—any residue can block the Laminators and lead to poor or uneven results.

6 LAMINATE - STEP 1

FINALIZING LAMINATOR

Fragile Compromised

Must wear gloves



Towel dry hair. Apply 2 oz (60ml) of **Fragile/Compromised Laminator** on large sections, ¼" (1cm) off scalp to ends. **SATURATE THE HAIR.**

PROCESS:

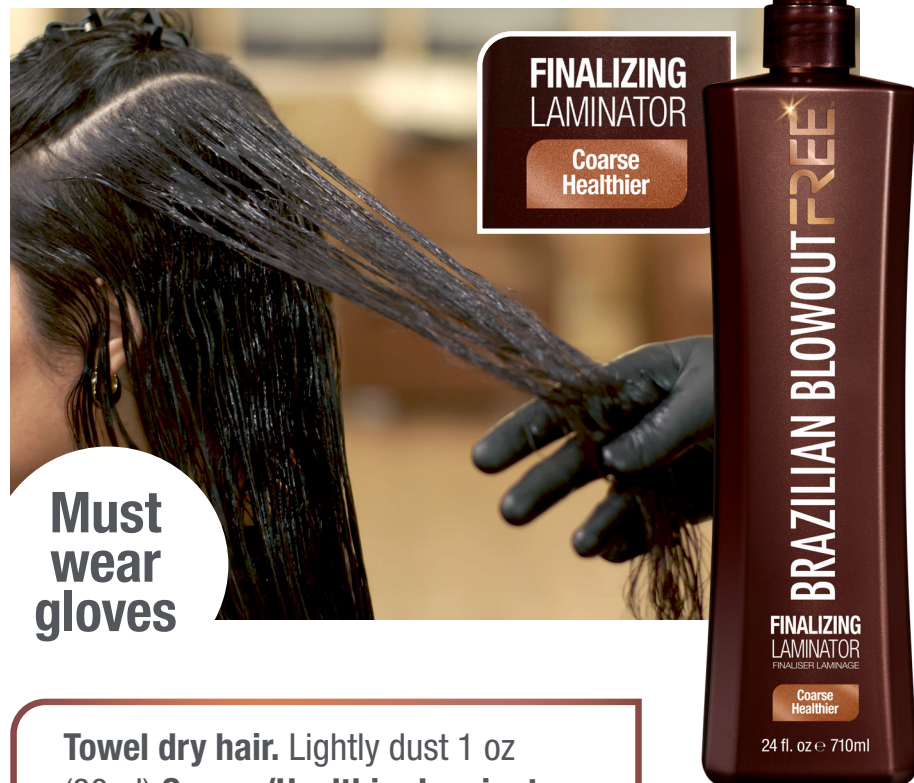
- 5 minutes
- Rinse after processing.



Why?

Crucial for balancing hair's pH and providing essential hydration after the mixed solution.

7 LAMINATE - STEP 2



Must wear gloves

Towel dry hair. Lightly dust 1 oz (30ml) **Coarse/Healthier Laminator** on large sections.

DO NOT RINSE.

Why? Amplifies the smoothing and de-frizzing properties necessary to complete the treatment.

8 BLOW DRY & FLAT IRON

BLOW DRY

Blow dry using **high heat and strong tension** and a metal or ceramic round brush to get the hair as smooth as possible.



Why? A polished blow dry reduces frizz and helps set the new hair shape.



FLAT IRON

TEMPERATURE:

- 400–450°F (200–230°C)

SECTION SIZE:

- ½" to 1½" (1.5cm to 4cm)
- Use smaller sections if needed.

PASSES:

- 8 passes to maintain curl
- 12 passes for sleekest results

Why? Using the correct number of passes & temperature locks in desired results.

After flat ironing, the service is complete. There is no wait period. Client can exercise, put hair in a clip, etc.

FRAGILE/COMPROMISED HAIR*

INSTRUCTIONS



INCLUDES: Double-processed, heavily highlighted, balayage, fine/thin, dry, curly/wavy, frizzy, weaker hair.

*If the client's hair is too weak for another bleaching or highlighting process, we do not recommend performing this treatment. Once the hair is stronger and can withstand a lightening service, proceed with the Fragile/Compromised instructions.

1 CLEANSE & PREP



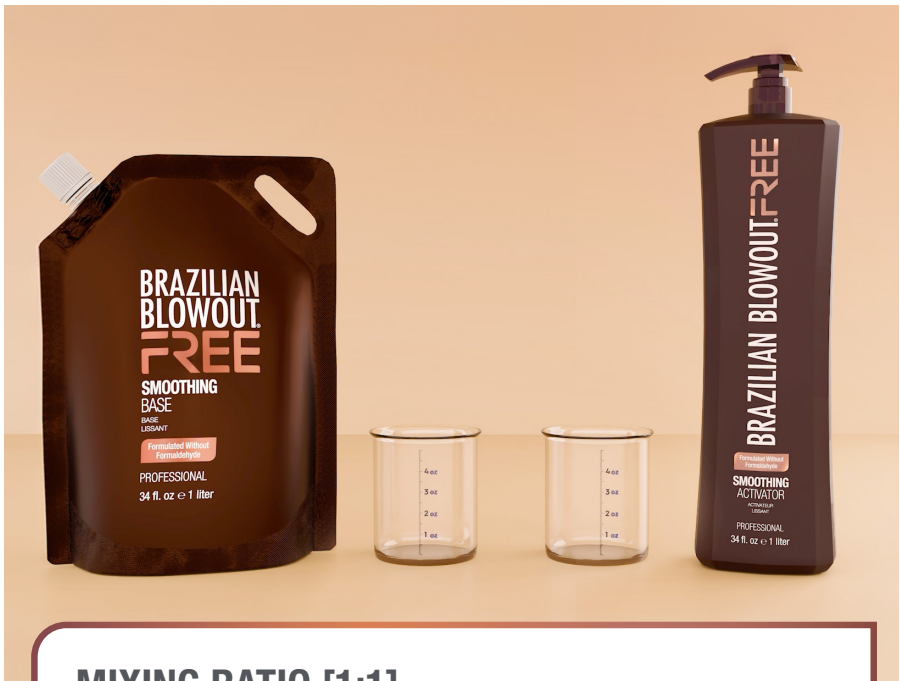
Spray **Micro Chelating Cleanser** generously on soaking wet hair & scalp. Massage until foamy. Rinse thoroughly. Repeat if necessary.



TOWEL DRY hair to **50% dry**. Then divide hair into 4 sections. Thoroughly brush hair before application.

Why? Required for the smoothing system to work, removes deposits & buildup while opening the cuticle—allowing smoothing solution to reach the hair bonds.

2 MEASURE & MIX



MIXING RATIO [1:1]

50% **Smoothing Base** + 50% **Smoothing Activator**

MEASURE:

SHORT HAIR
2 - 3 oz.
(60-90ml)
Combined

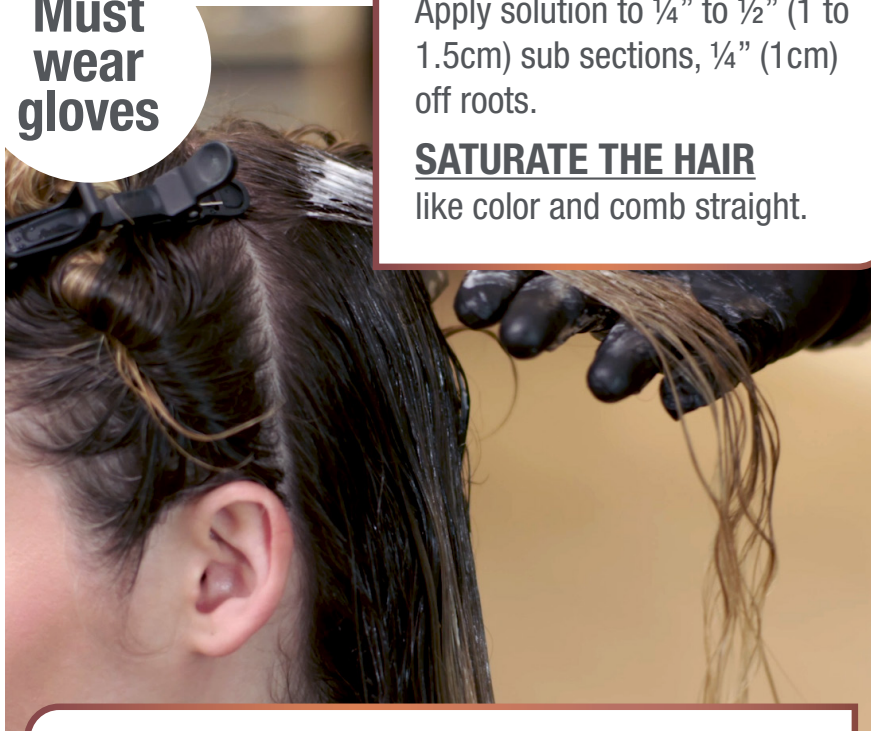
MEDIUM LENGTH HAIR
3 - 4 oz.
(90-120ml)
Combined

LONG HAIR
4 - 6 oz.
(120-180ml)
Combined

Why? The treatment will not work unless the Smoothing Base and Smoothing Activator are properly mixed together.

3 APPLY

Must wear gloves



Apply solution to ¼" to ½" (1 to 1.5cm) sub sections, ¼" (1cm) off roots.

SATURATE THE HAIR
like color and comb straight.

IMPORTANT: Do not excessively comb the hair again after applying.

IMPORTANT: For hair with different integrities, apply to resistant hair first and weaker hair last. Hair with overly **compromised ends, LEAVE OUT.**

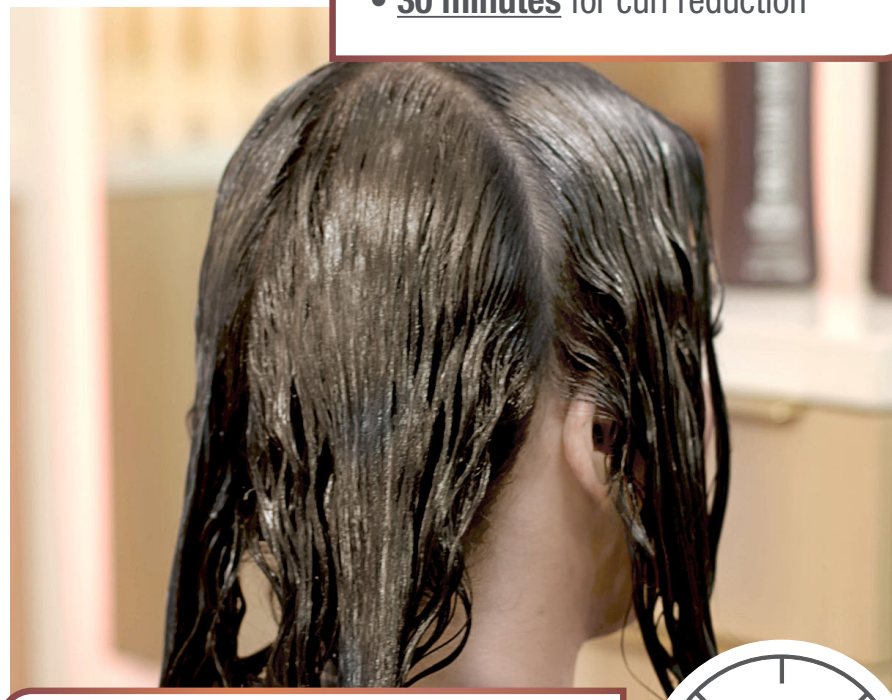
Why?

Saturate solution onto 50% towel-dried hair for optimal penetration—excess water can dilute the solution and reduce results.

4 PROCESS

Process in open air. Leave hair straight. Do not clip. Do not use heat.

- **20 minutes** to defrizz
- **30 minutes** for curl reduction



IMPORTANT: Test elasticity of the hair **periodically.** If the hair shows signs of excessive elasticity, rinse. Otherwise let hair process up to 30 min.



Why?

Processing allows smoothing technology to move bonds into alignment for desired results.

5 RINSE & CLEANSE

Rinse hair with **HOT WATER** for **3 MINUTES**.



Cleanse 2-3 times with **Micro Chelating Cleanser**. Scrub hair **vigorously**—roots to ends.



IMPORTANT: Rinse and cleanse as directed to remove **ALL** solution from the hair.

Why? The smoothing solution must be fully rinsed and thoroughly cleansed—any residue can block the Laminators and lead to poor or uneven results.

6 LAMINATE - STEP 1



FINALIZING LAMINATOR
Fragile Compromised

Must wear gloves



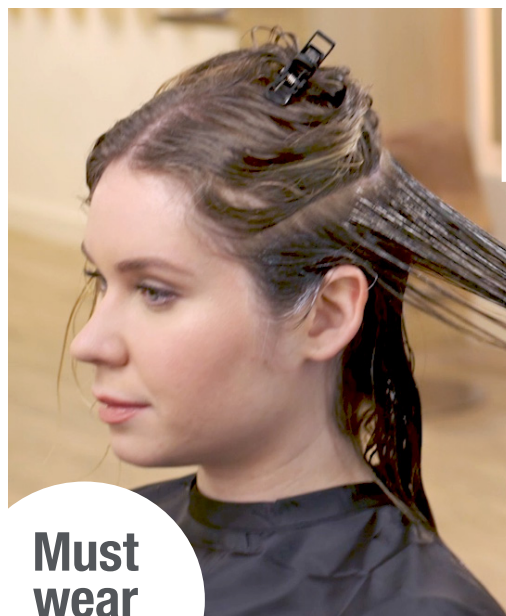
Towel dry hair. Apply 2 oz (60ml) of **Fragile/Compromised Laminator** on large sections, ¼” (1cm) off scalp to ends. **SATURATE THE HAIR.**

PROCESS:
• 20 minutes
Rinse after processing.



Why? Crucial for balancing hair's pH and providing essential hydration after the mixed solution.

7 LAMINATE - STEP 2



**FINALIZING
LAMINATOR**

Coarse
Healthier



**Must
wear
gloves**

Towel dry hair. Lightly dust 1 oz (30ml) **Coarse/Healthier Laminator** on large sections.

DO NOT RINSE.

Why? Amplifies the smoothing and de-frizzing properties necessary to complete the treatment.

8 BLOW DRY & FLAT IRON

BLOW DRY

Blow dry using **high heat and strong tension** and a metal or ceramic round brush to get the hair as smooth as possible.



Why?

A polished blow dry reduces frizz and helps set the new hair shape.



FLAT IRON

TEMPERATURE:

- 400–450°F (200–230°C)

SECTION SIZE:

- ½" to 1½" (1.5cm to 4cm)
- Use smaller sections if needed.

PASSES:

- 8 passes to maintain curl
- 12 passes for sleekest results

Why?

Using the correct number of passes & temperature locks in desired results.

After flat ironing, the service is complete. There is no wait period. Client can exercise, put hair in a clip, etc.

MAINTENANCE

- **Brazilian Blowout Deep Conditioning Masque**
Use for first 3-4 washes



- **Brazilian Blowout Ionic Bonding Spray**
Prolongs Treatment



- **Brazilian Blowout Anti-Frizz Shampoo & Conditioner**
Prolongs Treatment





STYLIST SUPPORT

TRAINING

Sign up for Free
Live Trainings.
Scan to book now.

HOTLINE

Connect with a **Brazilian Blowout Trainer** *Instantly.**
1-877-779-7706 (press "3")

*Monday-Friday 7:30AM to 4:30PM PST

BRAZILIAN BLOWOUT FREE



brazilianblowout



@brazilianblowout



@brazilianblowout1

brazilianblowout.com 1.877.779.7706

The Brazilian Blowout FREE Smoothing Treatment must be performed by a certified licensed stylist only and must be used in accordance to manufacturer instructions.